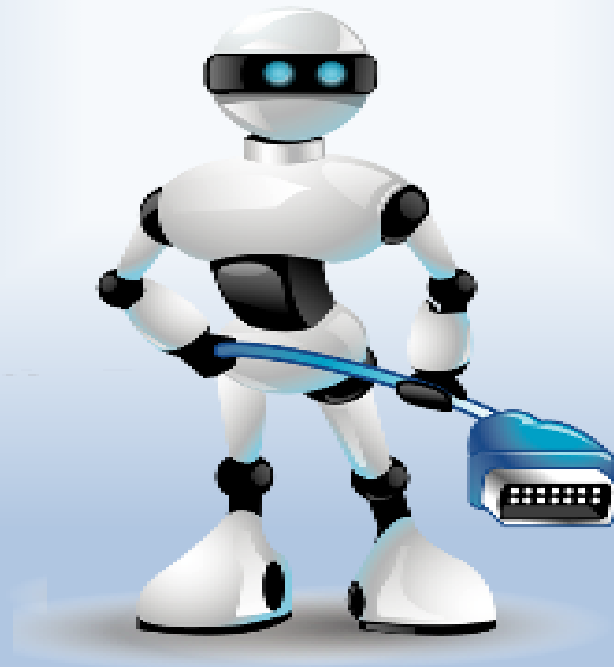
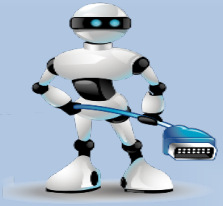


AirPro Diagnostics

It's not the hardware.....It's not the software.....

It's the ability to understand the problem in the customer's domain to deliver configurable solutions





What is AirPro?

- ❖ **AirPro** is a remotely controlled scan tool with both direct OEM and aftermarket OEM compatible software directly connected to a vehicle.
- ❖ The **AirPro** is remotely accessed by diagnostic specialists via shop supplied Wi-Fi, cabled, or cellular internet access.
- ❖ Remote Diagnostic Specialists use the **AirPro** to perform procedures needed for pre-or post-repair scan analysis, diagnostic functions, system calibrations or module programming.
- ❖ All scan results and recommendations are communicated and permanently stored in “**ORION**”

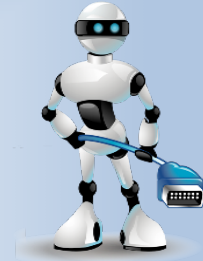
What is ORION ?

- ❖ ORION is AirPro Diagnostics' cloud based diagnostic management system, customized for each client and accessed at app.airprodiag.com secure log in.
- ❖ Once logged in to your account ORION allows easy process to enter vehicle information and submit scan requests
- ❖ When scan procedures are complete, **AirPro** specialists will contact you regarding initial results followed by a detailed report downloaded into your ORION application
- ❖ ORION allows streamlined shop access to view all their data in one easy-to-use application..



AirPro Remote Diagnostics,

State-of-the-Art diagnostic, calibration and Programming Capabilities



- ❖ Cutting edge technology and ease of use
- ❖ Portable, compact, and rugged design
- ❖ Wireless connectivity to Wi-Fi or Cellular access points.
- ❖ OEM and Aftermarket Diagnostic or Programming procedures as needed.
- ❖ 98% vehicle coverage form 1996 - 2017

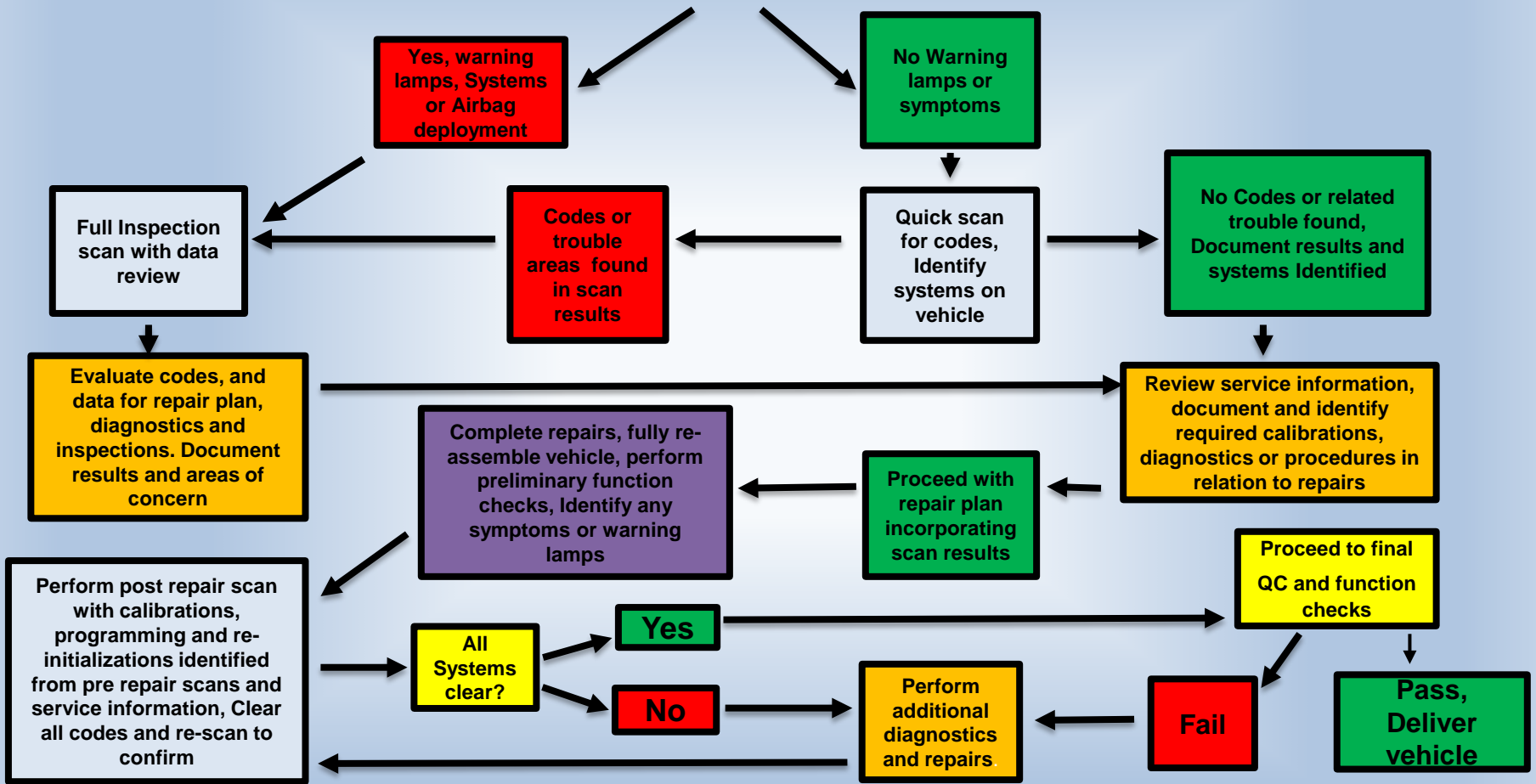
AirPro Remote Diagnostics,

Offers State-of-the-Art diagnostic, calibration and Programming Capabilities

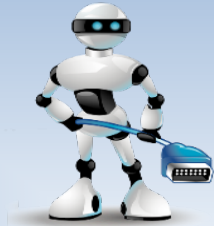
- ❖ Software and systems are managed on-line by **AirPro** system specialists
- ❖ Enables shops to make repair decisions based on their current or planned skill sets.
- ❖ **AirPro** Diagnostic Specialists recommend OEM diagnostic procedures and perform calibrations or programming remotely.



Inspect Vehicle and Describe Damage
Document any warning lamps or symptoms
Inspect and identify and document accessories or ADAS components



AirPro with Orion and How it works.



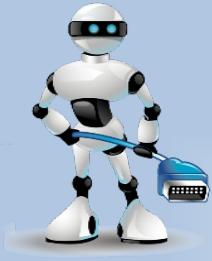
The Shop requests a service using ORION management system (app.orion.com)

The Shop connects the AirPro and prepares the vehicle for scanning

An AirPro Diagnostic Specialist logs on to the AirPro and performs the services

AirPro Diagnostic specialist contact the shop during or at conclusion of scan procedure

AirPro Diagnostic specialists complete the report and uploads into shop's ORION application system



SCAN DEFINITIONS

QUICK SCAN

INSPECTION SCAN

DIAGNOSTIC SCAN

COMPLETION SCAN

FOLLOW-UP SCAN

Quick Scan

- All systems scan check, no codes, No Charge
- Obvious non-related codes, No Charge
- Help Identify optional electronic equipment
- Recommend OEM required calibrations
- When trouble is found, scan automatically proceeds to ***Inspection Scan*** for diagnostic information



Inspection Scan

- Diagnostic information provided for trouble areas
- Analyze air bag deployments and module condition
- Analyze optional electronic equipment
- Identify Trouble areas that require further inspections or diagnostics
- Analyze possible pre-existing conditions
- Increases estimate accuracy
- upsell repairs not associated with the loss.





Completion Scan

- Clear fault codes caused by damage or repair processes
- Re-set affected systems
- Perform required calibrations
- Program replacement modules
- Returns vehicle electronics to pre-loss condition
- When faults are detected that need further attention, scan automatically changes to a diagnostic scan with recommendations.

Diagnostic Scan



- When additional trouble is found with the vehicle that requires on-vehicle repairs or on vehicle pinpoint troubleshooting during a completion scan
- A known problem that requires a scan tool to access data, troubleshoot, reset systems, program a replacement module etc. to proceed with vehicle repairs
- A final completion scan will still be needed to clear codes, perform calibrations and verify repairs if vehicle assembly is not complete

Follow-Up Scan

- No Charge, Applies after a “*Completion*” or “*Diagnostic scan*” was performed on the same vehicle.
- Applies if a vehicle returns with malfunction indicators or additional symptoms after a QC road-test or delivery to customer.
- If a vehicle exhibits malfunction indicators or additional symptoms after a “*Completion scan*” we will perform a follow up scan to identify returning issues and make recommendations.



Are you ready?

- **Emission and Engine Control Systems**
- **Multiple Restraint And Airbag Systems**
- **Parking Assist Systems**
- **Tire Pressure Monitoring Systems**
- **Ant-lock Brake/Stability/Traction Control Systems**
- **Electronic Steering**
- **Adaptive Headlamp Systems**
- **Backup Systems**
- **Radar Guidance Systems**
- **Collision Avoidance Systems**
- **Hybrid Drive Systems**
- **Hands Free Voice Control Systems**
- **Automatic Crash Notification**
- **Vehicle Navigation Systems**
- **Memory Positioning Systems**



We Are Ready!

QUESTIONS ?

